



Nor-Marine

Nor-Marine



Ningbo Factory
No.232 Danyang Road,Economy Development
Zone,Xiang shan,Ningbo,zhejiang,China, 315700
Tel: +86 574 89507501
Fax: +86 574 89507505
E-mail: info@normarine.cn
Web: www.nor-marine.cn

Shanghai Office
Room 605, No. 8 Dong'an Road
Shanghai, China 200032
Tel: +86 21 54060970
Fax: +86 21 54060971
E-mail: info@normarine.cn
Web: www.nor-marine.cn

Providing solutions
through partners

Nor-Marine

Nor-marine is a leading independent technical services, equipment and project management agency for the marine and offshore industry in Shanghai, China.

Through our globally sales network we provide a wide range of products to new-building market world wide.

Our desire as a Norwegian trading company is to supply excellent products to fair prices into the market. Excellent products mean excellent solutions,taking the whole lifecycle of the product into account.

By working close to trusted Norwegian and European manufactory companies, Nor-marine is able to supply various of marine and offshore equipments to new-building as well as retrofit projects.

We hope you find it worthwhile to spend some time studying our catalogue, and hopefully you will find our products and partners worth a try. We will, as a token of our gratitude, do our outmost to serve you the best we can.





EVE 亿纬锂能

To provide world-class Lithium battery
To be a leading company in the battery industry



Product features:

Highly automated production equipment to ensure the consistency of battery performance;

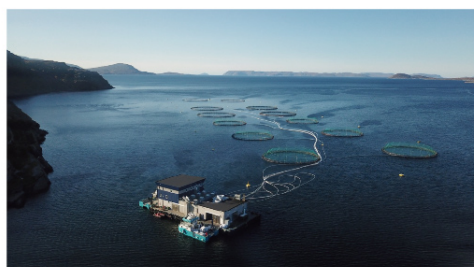
It adopts rectangular aluminum shell structure and composite cover plate with explosion-proof valve, with high safety performance and no leakage.;

Low internal resistance, high discharge rate, stable discharge platform;
Can be designed and customized according to customer requirements;;

Long cycle life, the remaining capacity of 1C/1C 6000 cycles is more than 80%.

Product Model: LF125P / LF280K / LF310

Application: Electric Vessel, Hybrid Vessel, Energy Storage System, Ocean Farm, etc.



Product Parameters

Item	EVE-B2-1P18S-11/12	EVE-B2-1P18S-21/22
Cell	LF280K	LF310
Module connection	1P18S	1P18S
Nominal voltage	57.6V DC	57.6V DC
Voltage range	52.2V ~ 63V DC	52.2V ~ 63V DC
Max. continuous charge and discharge rate	1C	1C
Capacity	280Ah	310Ah
Energy	16.128kWh	17.856kWh
Energy density	≥134Wh/kg	≥140Wh/kg
Thermal management	Liquid cooling/heating	Liquid cooling/heating
Service life	≥6000 cycles	≥10000 cycles
Operating temp.	-20~45°C	-20~45°C
Anticorrosion class	C5	C5
Max. operating altitude	2000m	2000m
Dimension (W*D*H)	426x897x240mm	426x897x240mm
Protection class	IP67	IP67

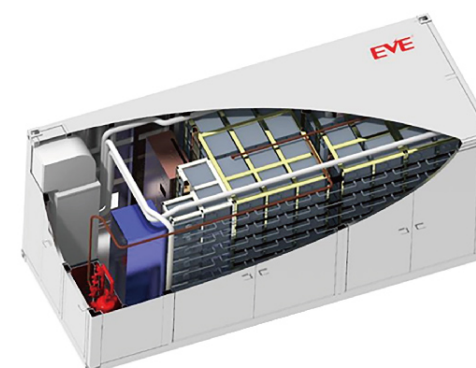
Product Parameters

Item	EVE-B4-1P48S-11	EVE-B4-2P24S-11
Cell	LF125P	LF125P
Module connection	1P48S	2P24S
Nominal voltage	154.56V DC	77.28V DC
Voltage range	139.2V ~ 168V DC	69.6V ~ 84V DC
Charge & discharge rate	Max. 3C	Max. 1.5C
Capacity	125 Ah	250 Ah
Energy	19.32 kWh	19.32 kWh
Energy density	125 Wh/kg	125 Wh/kg
Volume density	150 Wh/L	150 Wh/L
Thermal management	Top and bottom liquid cooling	Top and bottom liquid cooling
Service life	≥6000, 70% EOL	≥6000, 70% EOL
Operating temp.	-20~45°C	-20~45°C
Anticorrosion class	C5	C5
Max. operating altitude	2000m	2000m
Dimension (W*D*H)	900x674x196mm	900x674x196mm
Protection class	IP67	IP67



Battery system configurations :

Voltage	864V	806V	748.8V
8 strings (kWh)	1935.36	1806.336	1677.312
7 strings (kWh)	1693.44	1580.544	1467.648
6 strings (kWh)	1451.52	1354.752	1257.984
5 strings (kWh)	1209.6	1128.96	-



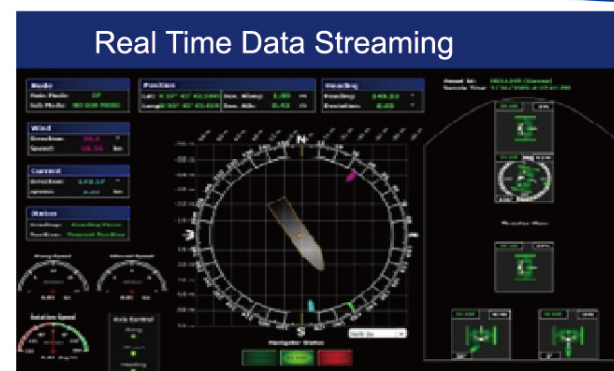
Products and Services



MT DP 2 on M/V Bourbon Mistral



- Dynamic Positioning (DP)
- Integrated Bridge System (IBS)
- MT C-Link Antenna Communication
- VOIP (Telephone Systems & Services)
- Electronic Navigational Chart (ENC)
- Weather Information Service
- Remote Diagnostics & Monitoring



MT C-Link Antenna Communication



MT IBS on F/T Pacific Glacier



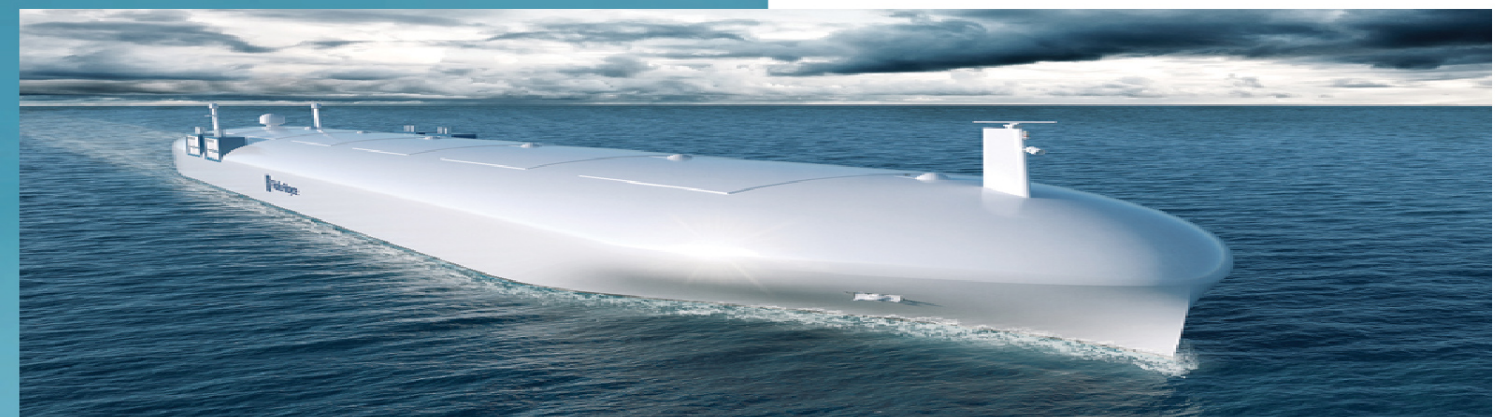
MT DP 3 on M/V Island Wellserver



MT IBS on M/V Geowave Voyager

www.marine-tehnologies.com

GUIDANCE
MARINE
A WÄRTSILÄ COMPANY



The first targetless laser position reference sensor

SCENESCAN
Positioning Technology from
GUIDANCE

- Additional independent DP reference sensor
- No target required
- Designed for close proximity
- No prisms, no maintenance
- Automatic reference point selection



SceneScan: A new sensor that doesn't use reflector targets. It scans and tracks the environment.



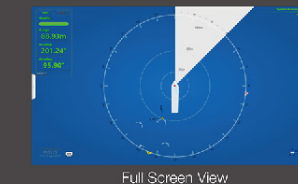
Applications

SceneScan is suitable for applications which use fixed structures such as:

- Platform, offshore and multipurpose supply vessel operations
- Jack-up rigs
- Accommodation barge operation
- Crew boats station-keeping
- Heavy lift activities
- Dive and ROV support
- Fish farms
- Short range operations

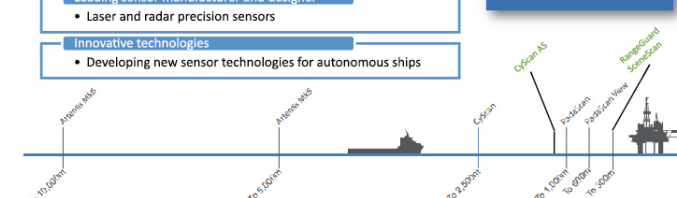


Standard View

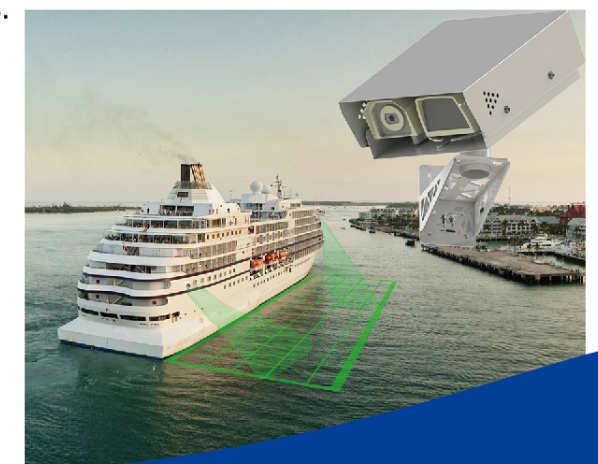


Full Screen View

- Expert in Positioning sensors
 - Design and manufacture local position reference sensors (PRS) for vessels in the oil industry
- Leading sensor manufacturer and designer
 - Laser and radar precision sensors
- Innovative technologies
 - Developing new sensor technologies for autonomous ships

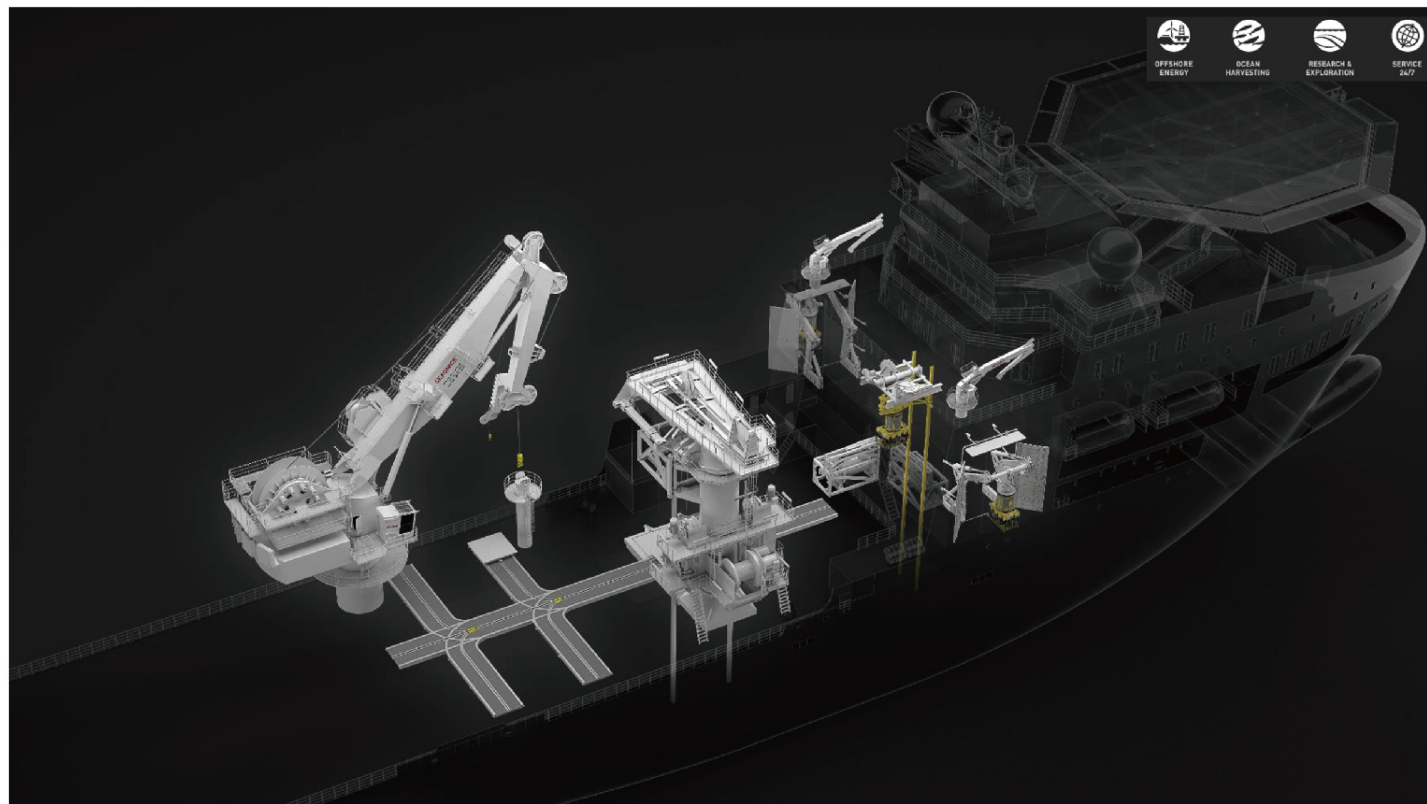


Guidance Marine built on this expertise and have developed a range of laser and microwave position reference sensors for the marine industry. These position reference have been used in the Oil & Gas, Naval, and commercial sectors and all rely on the traditional mechanism of a sensor making measurement from a dedicated "target" which is a reference point. The systems Guidance manufacture include CyScan, RadaScan, RadaScan View, RangeGuard, and Artemis.

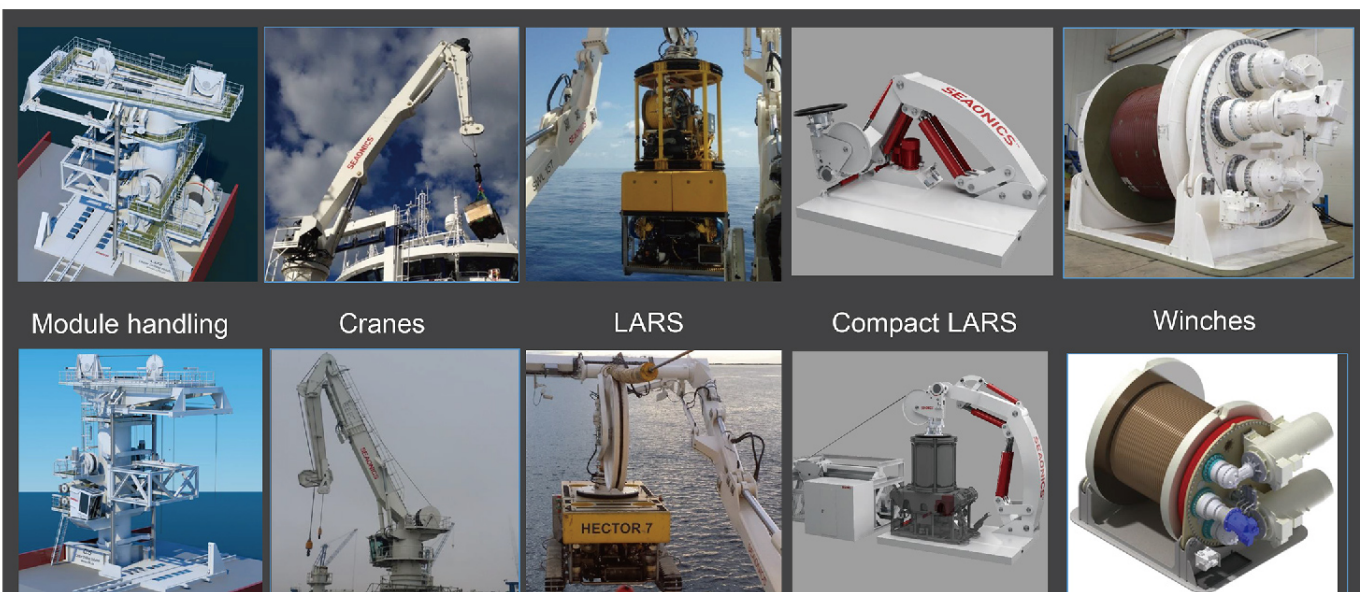


SEAONICS™

-your first choice in specialized handling technologies



Supplier of lift & handling technology solutions.
Complete system competence is covered in-house.
More than 30 years experience in winch handling systems.

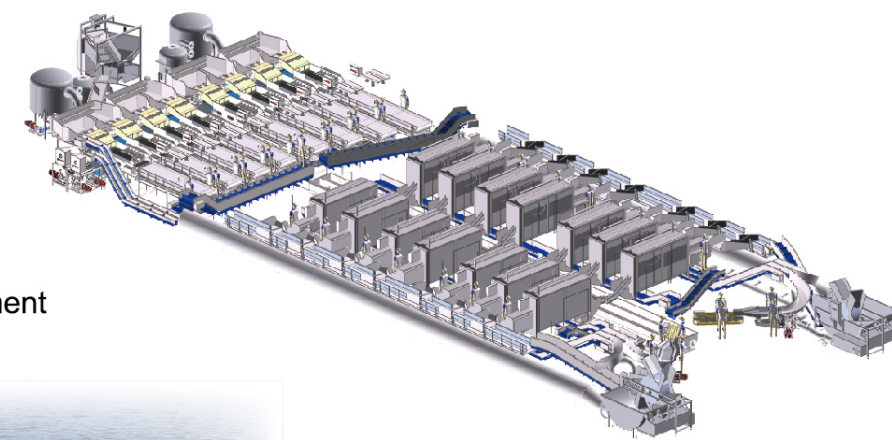


OPTIMAR



OPTIMAR Solution

- New automatic pump system for continuous pumping of trawl.
- Daily raw pumping capacity up to 2000 ton/24 hour
- Semi Automatic Weighing and Batching
- Automatic Freezing
- Automatic Boiling
- Automatic Packing
- Automatic Pallettizing
- Weighing and batching
- Project management
- Optimar control system
- Optimar factory project management
- Optimar instalation



SCANTROL



A game changer that makes AHC affordable

- For smaller vessels
- For all the winches and cranes for use for your subsea work

Includes all the tools you need to make it work with your winch or crane

Contact the Scantrol team for more information

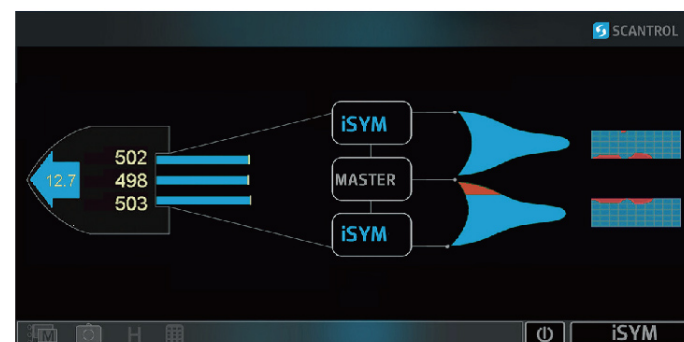
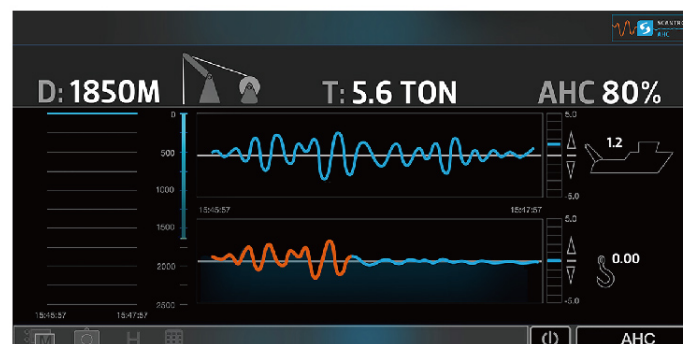
SCANTROL

+47 55 30 15 15
AHC@scantrol.com
www.scantrol.com

Scantrol AS
Sandviksboder 1c
5035 Bergen NORWAY

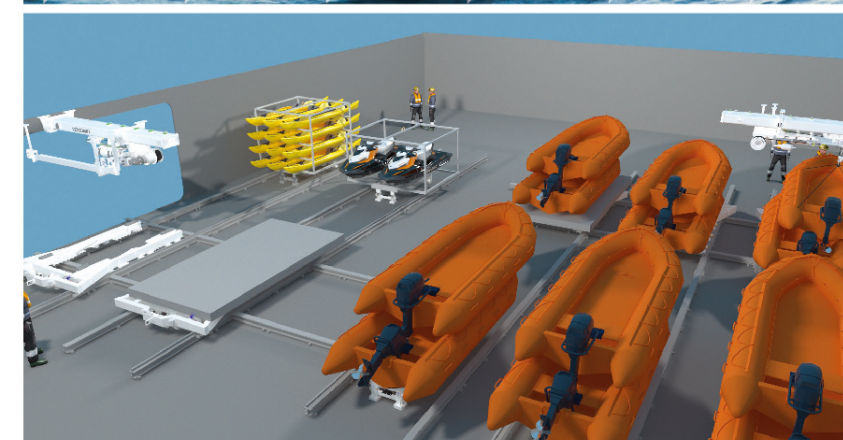
Scantrol supplies modern and proven control systems for winches and cranes to Marine and Offshore applications. Scantrol has more than 30 years of experience with control systems. More than 1100 vessels are equipped with Scantrol systems.

mTrack Includes all the tools you need to make AHC work with your winch or crane and can be used with both new and existing winches. mTrack will increase operational time window and minimize weather related downtime for the vessel. With mTrack the operator will have precise control of the load also in rough sea conditions.



iSYM Autotrawl focuses on the trawl

iSYM Autotrawl functionality is developed in close cooperation with experienced fishermen from all over the world. Our control systems can be used with electric and hydraulic winches. Scantrol also offers upgrade of existing systems.



Vestdavit is the first choice for navies, coastguards, seismic and expedition cruise operators who need to launch and recover boats on board ships working in tough environments.

www.vestdavit.no

